

The logo is centered within a large, thin gold circle. This circle is surrounded by two more concentric gold circles, the innermost of which is slightly thicker. A thin gold line also passes through the circles, extending from the bottom left towards the top right.

SEK

by TAO Mexico

WE WANT TO BE PART OF YOUR STORY



## Style & Luxury

A welcoming 43-condo Luxury Residential Complex unlike any other. Bringing an architecturally iconic concept to the Riviera Maya with state of the art design that allows a relaxed living in a modern and luxurious setting within 2 and 3-bedroom condos that offer sweeping views to the jungle.

One of our most attractive developments that empower you to stay active at the gym, go running along the sky run track, swimming, savor a romantic night watching a movie in our cinema or just relax in the Jacuzzi while enjoying the sweet breeze.

Choose to upgrade your condo's layout and grant yourself to have a lock-off unit maximizing flexibility for space and rental options.





## Amenities



Gym



Swimming Pool



Sky Run Track



Lounge Area



24/7  
Security



Cinema



Jacuzzi Area


SEK









A person with a backpack is hiking on a dirt path through a dense tropical jungle. The path is surrounded by lush green vegetation, including tall trees and various plants. The scene is captured from a low angle, looking down the path towards the hiker.

Some of the advantages that SEK offers are the inclusion to access our Wellness Center\* and our Jungle Fish Beach Club\*, as well as access to some of the Tulum Country Club Resort's amenities\*.

Experience the greatest modern commodity within the heart of the jungle, surrounded by the beauty of the Mayan Riviera, experience SEK.

*\*Fees may apply.*

SEK























## Exclusivity & Beauty

A prime location is guaranteed, inside of the secure & luxurious Tulum Country Club by Bahia Principe.

Set in the tranquil ambiance of Akumal, the heart of the Riviera Maya. Relish an outstanding paradise merged by the lush jungle and crystal clear ocean, a place of sublime beauty.

Located between the well-known Playa del Carmen and the trendy Tulum where you'll be able to visit transparent cenotes and some of the world's most astonishing Mayan ruins with turquoise waves crashing at their feet. It is also very close to the Sian Ka'an Biosphere Reserve, declared World Heritage by UNESCO.

SEK is found a short distance from local fresh food restaurants, ice cream & coffee shops, and a few convenience stores found nearby.

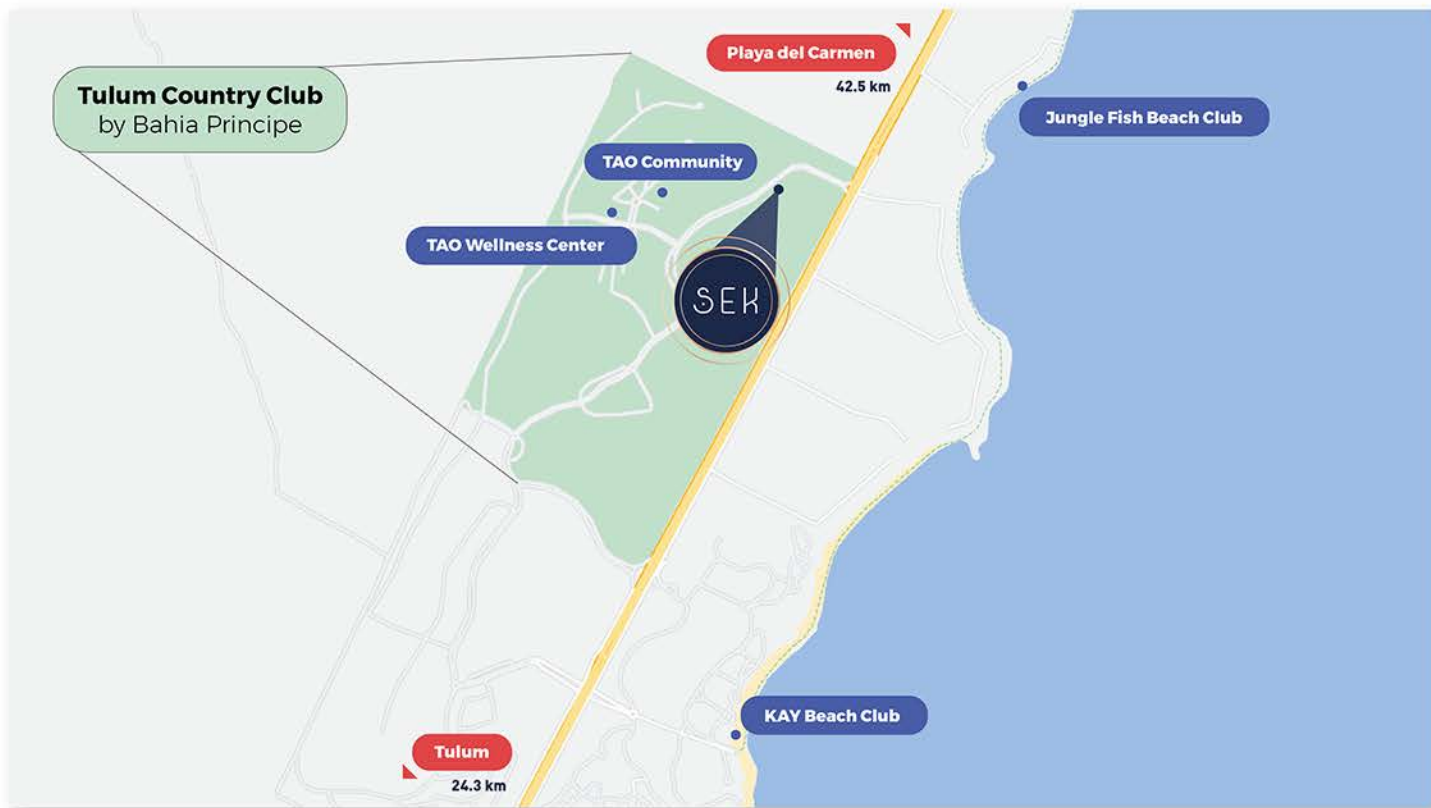
A true gem with a location unlike any other.



SEK



# Location Map

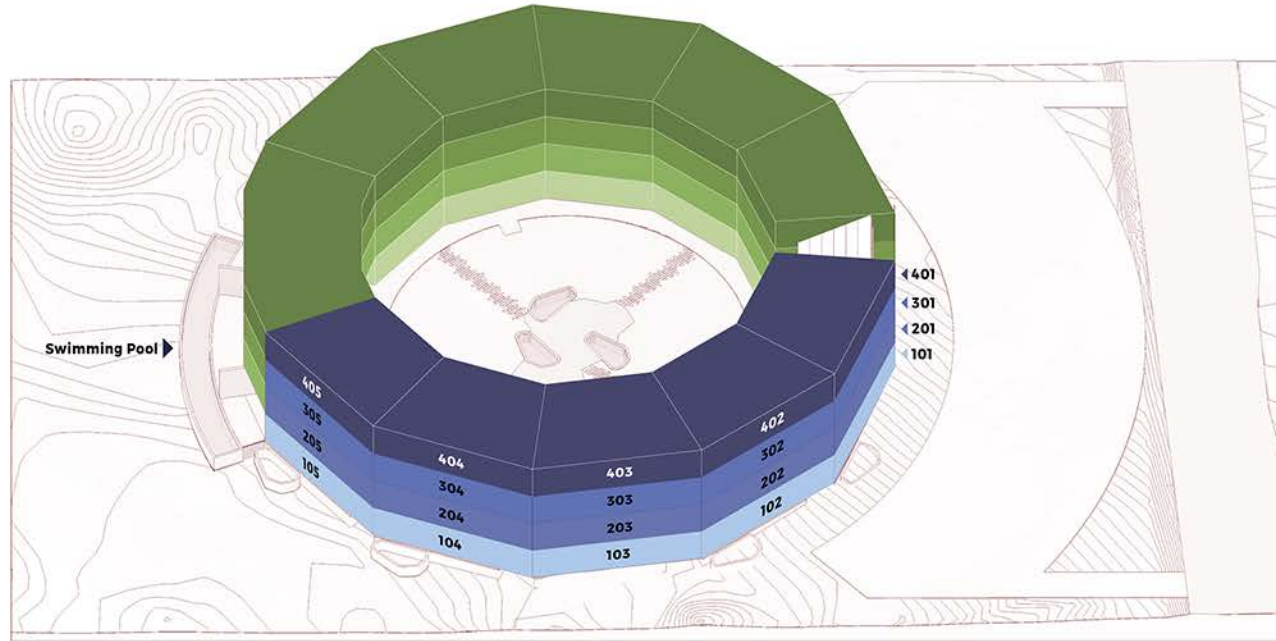


**CLICK HERE** TO VISIT THE LOCATION IN GOOGLE MAPS

SEK



# Unit Location Phase 1

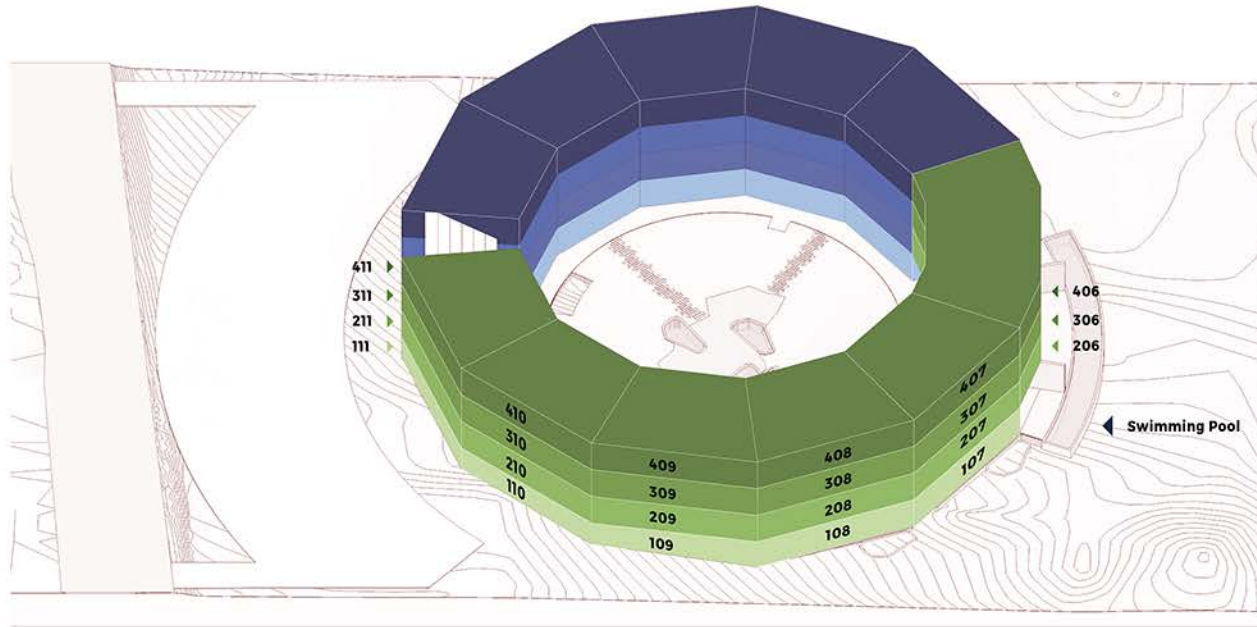


- Garden Floor
- Mezzanine 1 Floor
- Mezzanine 2 Floor
- Penthouse Floor with Private Rooftop





# Unit Location Phase 2



- Garden Floor
- Mezzanine 1 Floor
- Mezzanine 2 Floor
- Penthouse Floor with Private Rooftop

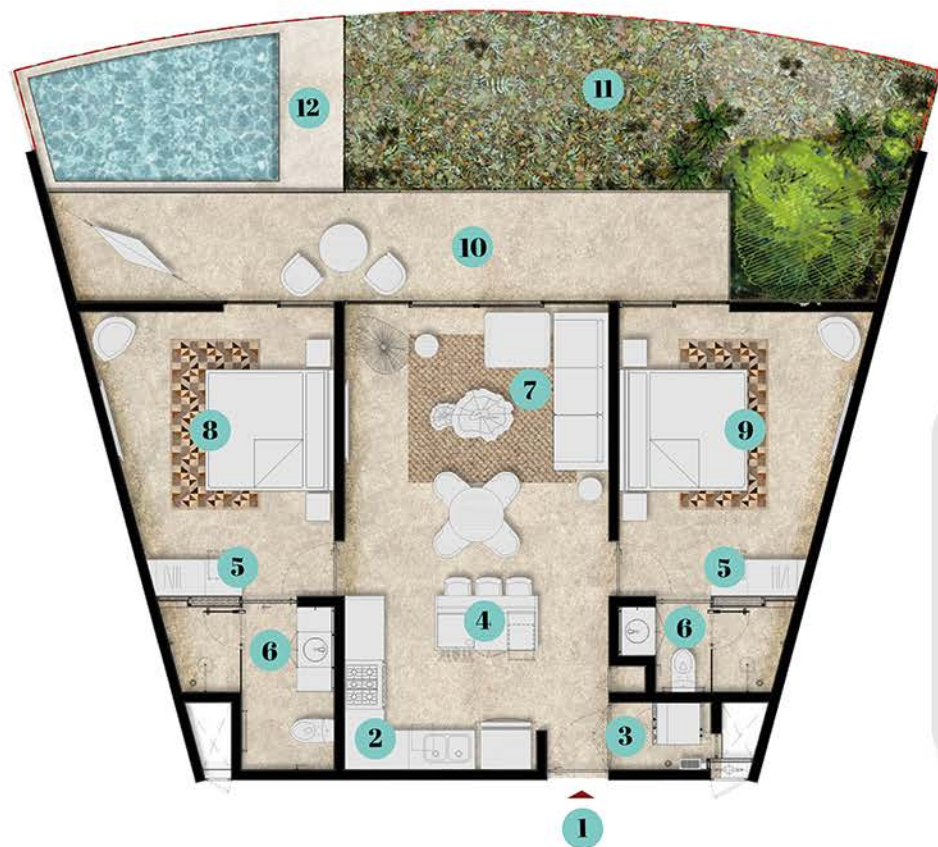




# Garden Master Floor Plan



# Garden Floor Plan



**2 BEDROOMS**



**2 BATHROOMS**

## INTERIOR

84 m<sup>2</sup>  
909 ft<sup>2</sup>

## TERRACE

20 m<sup>2</sup>  
214 ft<sup>2</sup>

## GARDEN

44 m<sup>2</sup>  
474 ft<sup>2</sup>

## TOTAL

148 m<sup>2</sup>  
1,596 ft<sup>2</sup>

- |                          |                            |
|--------------------------|----------------------------|
| <b>1</b> Entry           | <b>7</b> Living room       |
| <b>2</b> Kitchen         | <b>8</b> Master bedroom    |
| <b>3</b> Laundry room    | <b>9</b> Secondary bedroom |
| <b>4</b> Kitchen Island* | <b>10</b> Terrace          |
| <b>5</b> Closets         | <b>11</b> Garden           |
| <b>6</b> Bathrooms       | <b>12</b> Pool*            |

*\*Kitchen island and pool are an upgrade.  
\*Unit 103 & 109 cannot have an upgrade pool due to project restrictions.*



# Mezzanine 1 Master Plan

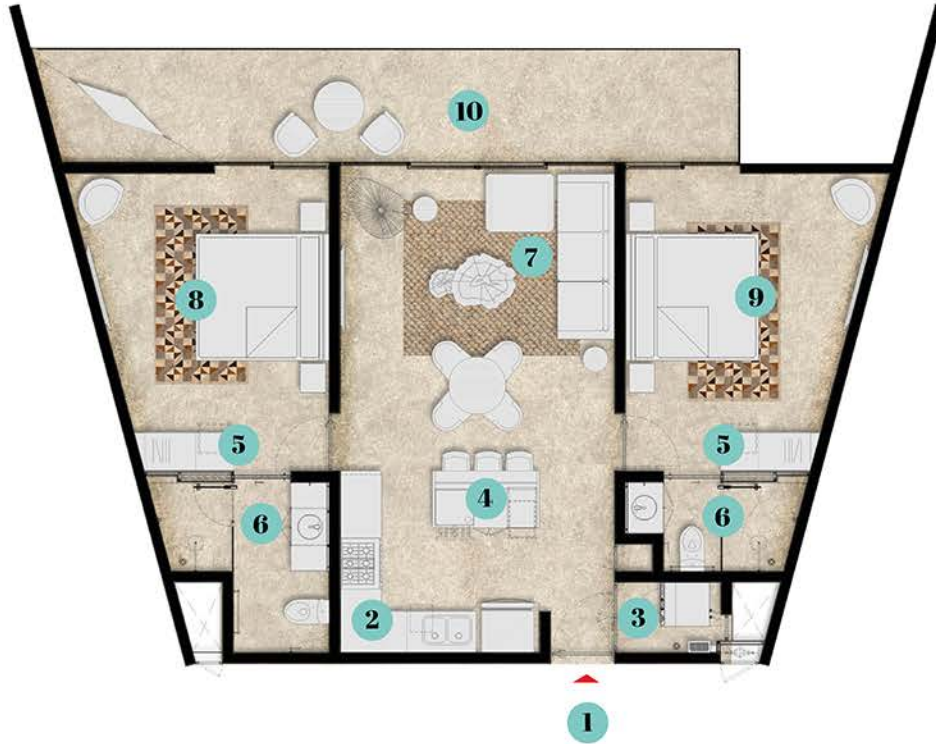


# Mezzanine 2 Master Plan





# Mezzanine 1 & 2 Floor Plan



**2 BEDROOMS**



**2 BATHROOMS**

## INTERIOR

84 m<sup>2</sup>  
909 ft<sup>2</sup>

## TERRACE

20 m<sup>2</sup>  
214 ft<sup>2</sup>

## TOTAL

104 m<sup>2</sup>  
1,123 ft<sup>2</sup>

- |                          |                            |
|--------------------------|----------------------------|
| <b>1</b> Entry           | <b>7</b> Living room       |
| <b>2</b> Kitchen         | <b>8</b> Master bedroom    |
| <b>3</b> Laundry room    | <b>9</b> Secondary bedroom |
| <b>4</b> Kitchen Island* | <b>10</b> Terrace          |
| <b>5</b> Closets         |                            |
| <b>6</b> Bathrooms       |                            |

*\*Kitchen island is an upgrade.*

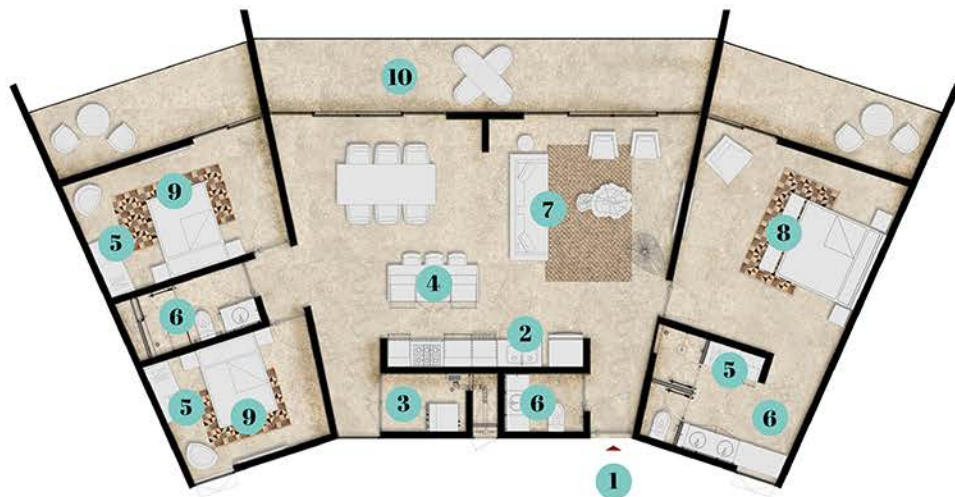
# Mezzanine 1 & 2 Floor Plan - 3 Bedrooms



**3 BEDROOMS**



**2.5 BATHROOMS**



## INTERIOR

141 m<sup>2</sup>  
1,522 ft<sup>2</sup>

## TERRACE

40 m<sup>2</sup>  
430 ft<sup>2</sup>

## TOTAL

181 m<sup>2</sup>  
1,948 ft<sup>2</sup>

- |                          |                            |
|--------------------------|----------------------------|
| <b>1</b> Entry           | <b>7</b> Living room       |
| <b>2</b> Kitchen         | <b>8</b> Master bedroom    |
| <b>3</b> Laundry room    | <b>9</b> Secondary bedroom |
| <b>4</b> Kitchen Island* | <b>10</b> Terrace          |
| <b>5</b> Closets         |                            |
| <b>6</b> Bathrooms       |                            |

*\*Kitchen island is an upgrade.*



# Penthouse Master Plan

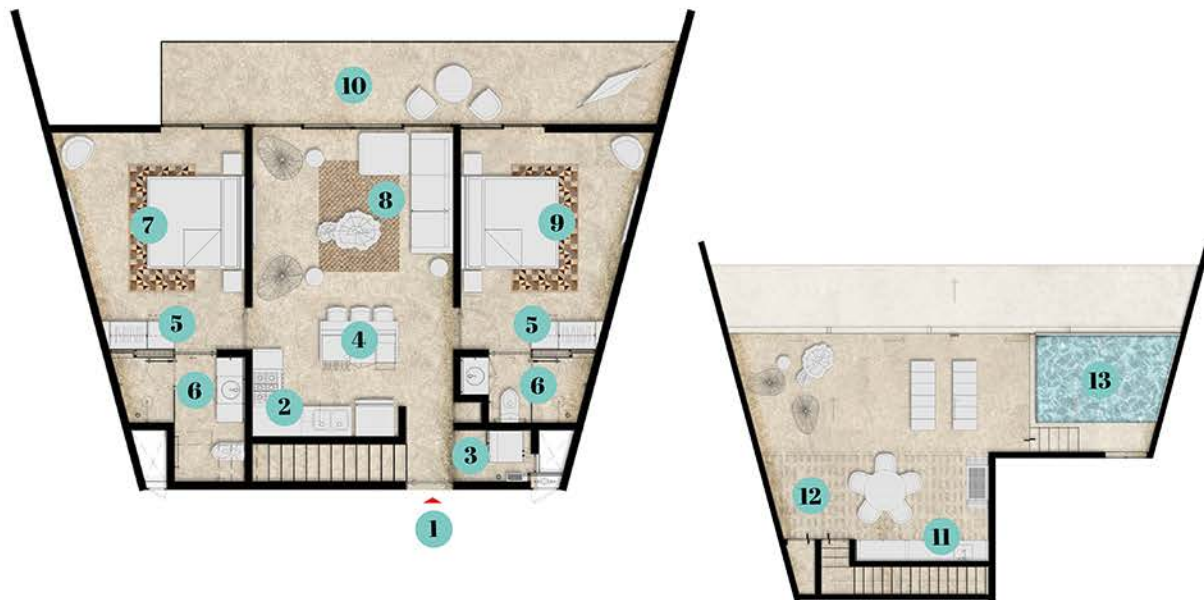


# Rooftop Master Plan





# Penthouse Floor Plan



**2 BEDROOMS**



**2 BATHROOMS**

- 1** Entry
- 2** Kitchen
- 3** Laundry room
- 4** Kitchen Island\*
- 5** Closets
- 6** Bathrooms
- 7** Master bedroom
- 8** Living room
- 9** Secondary bedroom
- 10** Terrace
- 11** Bar\*
- 12** Pergola\*
- 13** Pool\*

*\*Kitchen Island, Pool, Pergola and Bar are an upgrade.*

## INTERIOR

84 m<sup>2</sup>  
909 ft<sup>2</sup>

## TERRACE

20 m<sup>2</sup>  
214 ft<sup>2</sup>

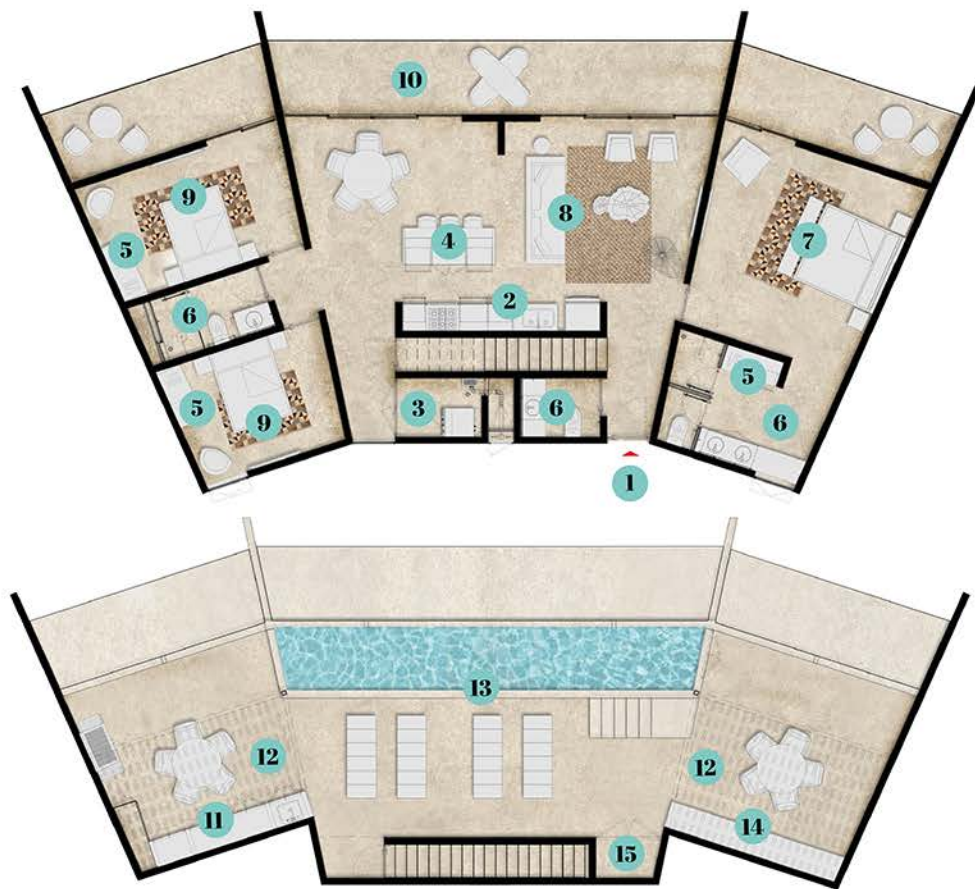
## ROOFTOP

68 m<sup>2</sup>  
733 ft<sup>2</sup>

## TOTAL

172 m<sup>2</sup>  
1,856 ft<sup>2</sup>

# Penthouse Floor Plan - 3 Bedrooms



**3 BEDROOMS**



**2.5 BATHROOMS**

- |                          |                            |
|--------------------------|----------------------------|
| <b>1</b> Entry           | <b>9</b> Secondary bedroom |
| <b>2</b> Kitchen         | <b>10</b> Terrace          |
| <b>3</b> Laundry room    | <b>11</b> Bar*             |
| <b>4</b> Kitchen Island* | <b>12</b> Pergola*         |
| <b>5</b> Closets         | <b>13</b> Pool*            |
| <b>6</b> Bathrooms       | <b>14</b> Concrete Bench*  |
| <b>7</b> Master bedroom  | <b>15</b> Storage Room*    |
| <b>8</b> Living room     |                            |

*\*Kitchen Island, Pool, Pergola, Bar, Concrete Bench and Storage Room are an upgrade.*

## INTERIOR

142 m<sup>2</sup>  
1,522 ft<sup>2</sup>

## TERRACE

40 m<sup>2</sup>  
430 ft<sup>2</sup>

## ROOFTOP

112 m<sup>2</sup>  
1,215 ft<sup>2</sup>

## TOTAL

294 m<sup>2</sup>  
3,170 ft<sup>2</sup>





## Access To Our Wellness Center

Let yourself fall in love with this inspiring sanctuary. Here you will find health, relaxation, and tranquility for the body, mind & spirit.

- Spa
- Yoga
- Temazcal
- Gym
- Restaurant
- 2 lap pools

*\*Walking distance from SEK.*

SEK



## Access to our Jungle Fish beach club

Enjoy paradise to the fullest in this refreshing place

• Beach Club • Swimming pool • Restaurant & Bar

*\* A 5-minute drive from SEK.*



SEK





## **We are here to advise you! Contact us Now!**



Mexico: (984) 875 5054  
USA & Canada toll-free: 1 800 461 1037



[info@taomexico.com](mailto:info@taomexico.com)

Click here to see more projects:  
[www.taomexico.com](http://www.taomexico.com)

A project by 

SEK

*\*The renders on this presentation are subject to small changes without prior notice.*